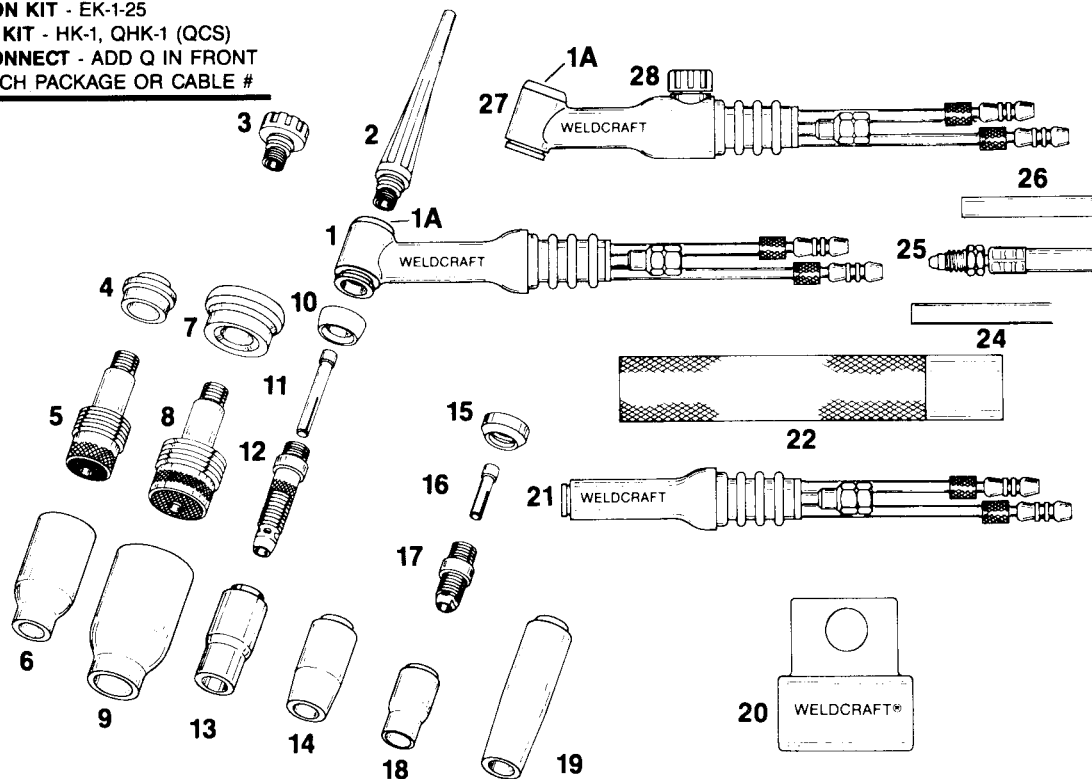


# WELDCRAFT®

## WP-18, 18V, 18SP 350 AMPS • WATER COOLED REPLACEMENT PARTS

**ACCESSORY KIT - AK-3**  
**CABLE COVERS - WC-3-10, WC-3-22**  
**EXTENSION KIT - EK-1-25**  
**HOOKE-UP KIT - HK-1, QHK-1 (QCS)**  
**QUICK CONNECT - ADD Q IN FRONT**  
**OF TORCH PACKAGE OR CABLE #**



ITEM NO.	STOCK NO.	DESCRIPTION	ITEM NO.	STOCK NO.	DESCRIPTION
1	WP-18	Torch body, includes cup gasket (70°)	20	45V11	Power cable adapter
1A	18-7	Insert	21	WP-18SP	Pencil torch body, includes cup gasket
2	57Y02	Long back cap, includes 98W18 O-ring	22	H-200	Handle (smooth, standard on WP-18, 18SP)
3	57Y04	Short back cap, includes 98W18 O-ring	24	-	Water Hose
4	54N01	Gas lens insulator			40V74 12½ ft. (3.8m), 40V74R
5	-	Gas lens (See chart A)			41V32 25 ft. (7.6m), 41V32R
6	-	Alumina gas lens nozzle (See chart B)	25	-	Power cable
7	54N63	Large diameter gas lens insulator			40V64 12½ ft. (3.8m), 40V64R
8	-	Large diameter gas lens (see chart A)			41V29 25 ft. (7.6m), 41V29R
9	-	Lg. Diameter gas lens nozzle (See chart B)	26	-	Gas Hose
10	18CG	Cup gasket			40V75 12½ ft. (3.8m), 40V75R18
11	-	Collet (See chart A)			41V30 25 ft. (7.6m), 41V30R18
12	-	Collet body (See chart A)	27	WP-18V	Valve torch body, includes cup gasket and
13	-	Alumina nozzle (See chart B)			valve stem (70°)
14	-	Lava nozzle (See chart B)	28	VS-2	Valve stem, includes 98W77 O-ring
15	18CG20	Stubby gasket			<b>Cable Repair Kits</b>
16	-	Stubby collet (See chart A)			ZCRK18 Power cable repair kit
17	17CB20	Stubby collet body (See chart A)			ZHRKG18 Gas hose repair kit
18	-	Stubby alumina nozzle (See chart B)			ZHRKW18 Water hose repair kit
19	-	Long lava nozzle (See chart B)			

**CHART A • COLLETS • COLLET BODIES • GAS LENS**

Electrode Diameter	.020 (.5mm)	.040 (1mm)	1/16 (1.6mm)	3/32 (2.4mm)	1/8 (3.2mm)	5/32 (4.0mm)
Collet	10N21	10N22	10N23	10N24	10N25	54N20
Collet Body	10N29	10N30	10N31	10N32	10N28	406488
Gas Lens	45V29	45V24	45V25	45V26	45V27	45V28
Lg. Dia. Gas Lens	45V0204	45V116	45V64	995795	45V63	
Stubby Collet	-	10N22S	10N23S	10N24S	10N25S	-
Stubby Collet Body	-		17CB20			-

**CHART B • GAS NOZZLES • HPN - HIGH PERFORMANCE NOZZLES AVAILABLE**

SIZE	4	5	6	7	8	10	12	SHORT
Alumina	10N50	10N49	10N48	10N47	10N46	10N45	10N44	-
Alumina Gas Lens	54N18	54N17	54N16	54N15	54N14	-	-	54N19*
Lg. Dia. Gas Lens	-	-	57N75	-	57N74	53N88	53N87	53N89*
Long Alumina	-	10N49L	10N48L	10N47L	-	-	-	-
Long Gas Lens	-	54N17L	54N16L	54N15L	-	-	-	-
Lava	105Z43	105Z42	105Z44	105Z45	08N78	08N79	08N80	-
Long Lava	12N03	105Z60	12N02	105Z61	-	-	-	-
Stubby Alumina	13N08	13N09	13N10	13N11	13N12	13N13	-	-

\*Not recommended for use with high frequency current.

Water cooled torches require cooling water flow of 1 quart (.94 liter) to 1½ quarts (1.4 liters) per minute at a maximum of 50 PSI pressure.

**WELDCRAFT, APPLETON, WISCONSIN 54911 U.S.A. PH:882-6801 800-752-7620(USA ONLY) FAX:920-882-6840**  
 An Illinois Tool Works Company • COPYRIGHT 1983 WELDCRAFT PRODUCTS, INC.