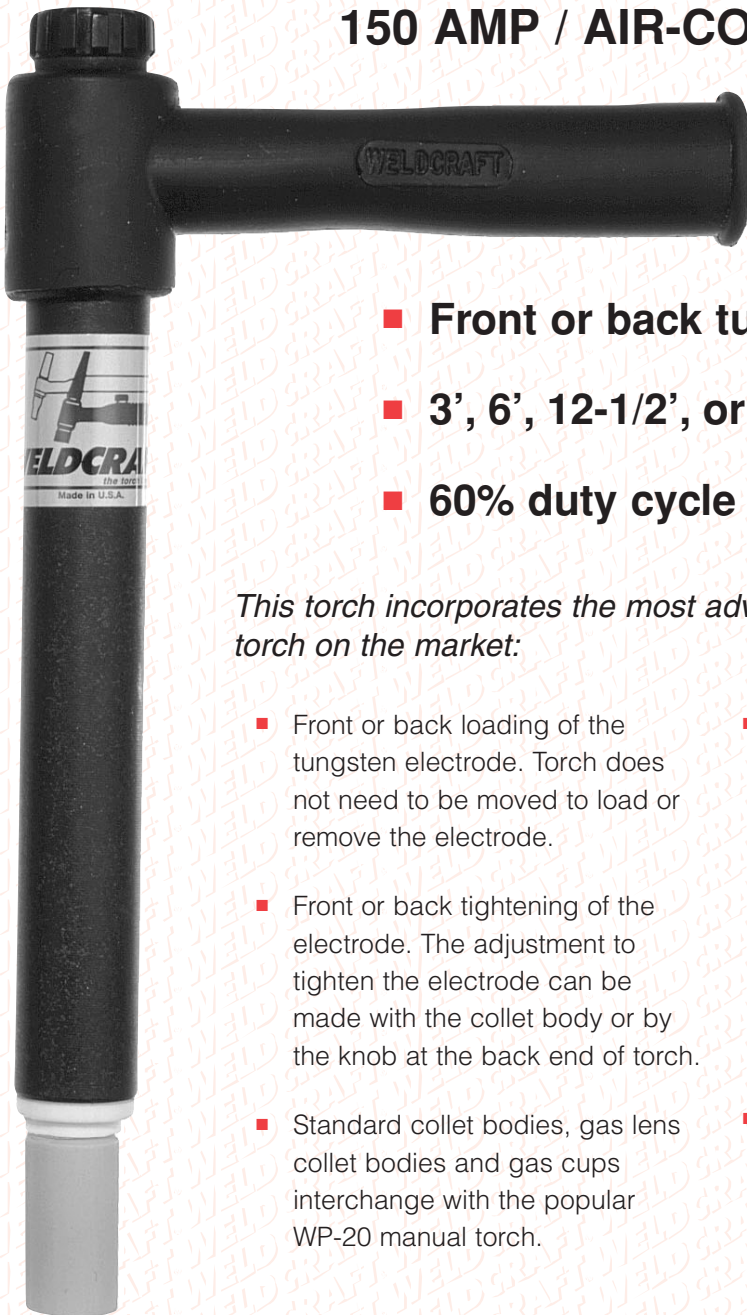


WP-23

150 AMP / AIR-COOLED MACHINE TORCH



- Front or back tungsten loading
- 3', 6', 12-1/2', or 25' cables available
- 60% duty cycle rating

This torch incorporates the most advanced features of any machine torch on the market:

- Front or back loading of the tungsten electrode. Torch does not need to be moved to load or remove the electrode.
- Front or back tightening of the electrode. The adjustment to tighten the electrode can be made with the collet body or by the knob at the back end of torch.
- Standard collet bodies, gas lens collet bodies and gas cups interchange with the popular WP-20 manual torch.
- Choice of models. Model A uses 7" long tungsten electrodes. Ideally suited for clamp type mounting fixture.
- Model B uses 3" long tungsten electrodes.
- Both models use a 3/4 inch diameter barrel.
- Also available in water-cooled - see WP-22A

- WP-23A-3-2 Torch Pkg., 3' (0.9M) 2PC.
- WP-23A-6-2 Torch Pkg., 6' (1.8M) 2PC.
- WP-23A-12-R Torch Pkg., 12-1/2' (3.8M) 1PC. Rubber
- WP-23A-12-2 Torch Pkg., 12-1/2' (3.8M) 2PC.
- WP-23A-25-R Torch Pkg., 25' (7.6M) 1PC. Rubber



Model WP-23 / Air Cooled Machine Torch / 150 AMPS



Features:

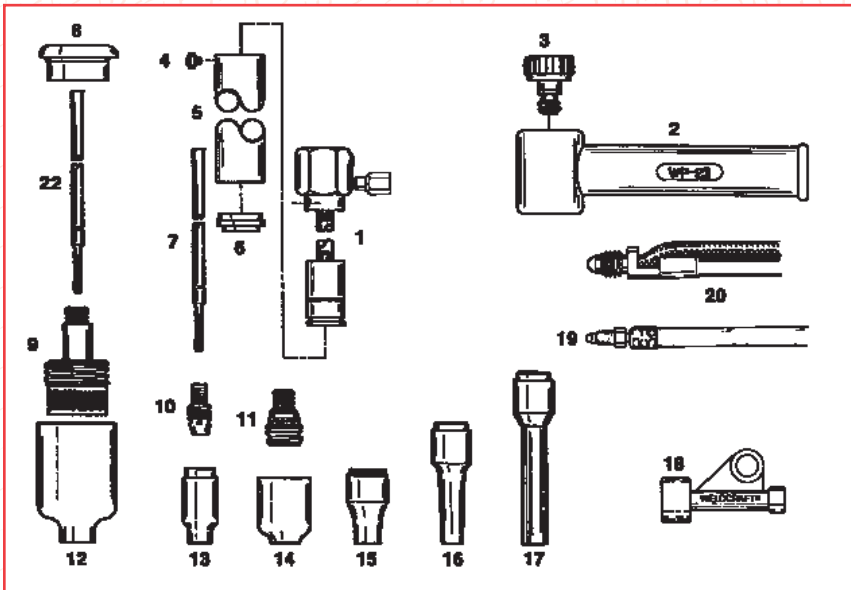
- Also available in water cooled - see WP-22A
- Front or back tungsten loading
- 60% duty cycle

Specifications:

	23A	23B
Capacity (Max) (dcsp).....	150 amps	150 amps
Weight (less power cable).....	5.6 OZ.	3.5 OZ.
Torch Length.....	6-5/8"	3-7/16"
Barrel Diameter.....	3/4"	3/4"

Part No.	Description	Max Amps
WP-23A	Torch Body, 7"	150
WP-23A-3-2	Torch Pkg., 3' (0.9M) 2PC.	
WP-23A-6-2	Torch Pkg., 6' (1.8M) 2PC.	
WP-23A-12-R	Torch Pkg., 12-1/2' (3.8M) 1PC. Rubber	
WP-23A-12-2	Torch Pkg., 12-1/2' (3.8M) 2PC.	
WP-23A-25-R	Torch Pkg., 25' (7.6M) 1PC. Rubber	
WP-23B	Torch Body, 3"	150

Model A uses 7" long tungsten electrodes
Model B uses 3" long tungsten electrodes



Item No.	Part No.	Description
1	WP-23A	7" long torch body
	WP-23B	3" long torch body
2	22-9-1	Insulating boot
3	22-7	Collet knob, includes 98W77 O-ring
4	18R-1	6-32 x 3/16" fillister head screw
	22-8B	3" barrel
	22-8A	7" barrel
6	22-10	Cup gasket
7	-	Collet (See chart A)
8	54N63-22	Lg. diameter gas lens insulator
9	-	Lg. diameter gas lens (See chart A)
10	-	Collet body (See chart A)
11	-	Gas lens (See chart A)
12	-	Lg. diameter gas lens nozzle (See chart B)
13	-	Alumina nozzle (See chart B)
14	-	Alumina gas lens nozzle (See chart B)
15	-	Lava nozzle (See chart B)
16	-	Long lava nozzle (See chart B)
17	-	Extra long lava nozzle (See chart B)
18	105Z57	Power cable adapter
19	-	Power cable — 1 piece
	57Y01R	12-1/2' (3.8M) rubber
	57Y03R	25' (7.6M) rubber
20	-	Power cable — 2 piece
	57Y01-2L3	3' (0.9M)
	57Y01-2L6	6' (1.8M)
	57Y01-2	12-1/2' (3.8M)
	57Y02-2	25' (7.6M)

Chart A: Collets, Collet Bodies, Gas Lens

ITEM NO.	DESCRIPTION	ELECTRODE DIAMETER			
		.040	1/16	3/32	1/8
7	Collet	22N21A 22N21B	22N22A 22N22B	22N23A 22N23B	22N24A 22N24B
10	Collet Body	13N26	13N27	13N28	13N29
11	Gas Lens	45V42	45V43	45V44	45V45
22	Lg. Dia. Gas Lens Collet**	22N21AL	22N22AL	22N23AL	22N24AL
9	Lg. Dia. Gas Lens	45V0204S	45V116S	45V64S	995795S

** Available for WP-23A model only

Chart B: Gas Nozzles, HPN - High Performance Nozzles Available

ITEM NO.	DESCRIPTION	SIZE								
		3	4	5	6	7	8	10	12	SHORT
13	Alumina		13N08	13N09	13N10	13N11 •	13N12 •	13N13		
14	Alumina Gas Lens		53N58 •	53N59 •	53N60 •	53N61 •	53N61S			
12	Lg. Dia. Gas Lens				57N75		57N74	53N88 •	53N87 •	53N89*
15	Lava		13N14	13N15	13N16	13N17	13N18	13N19		
16	Long Lava	796F70	796F71	796F72	796F73					
17	Ex. Long Lava	796F74	796F75	796F76	796F77					

- * Not recommended for use with high frequency current
- HPN nozzle available

Accessories

Item	Description
Cable Covers:	WC-3-10, WC-3-22
Hook-Up Kit:	40V77
Extension Kit:	EK-2-25-R (1PC. Cable only)
QCS DIN Kit:	Q5(2PC.), Q5G-150(1PC.), Q5GT-150 (1PC. Gas-thru)