

CS 300/300V

AIR-COOLED

CRAFTER SERIES™

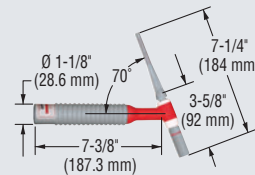
Hand-Held Torches

10/2010 CS3.0

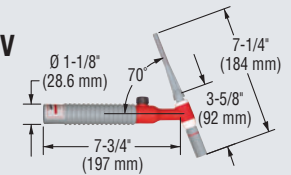


- Torch packages are Ready To Weld™
- 300 amp DC, 250 amp AC at 60% duty cycle
- Electrode range: .020" – 5/32" (0.5 – 4.0 mm)

CS 300



CS 300V



Introducing the solution to demanding air-cooled applications up to 300 amps!

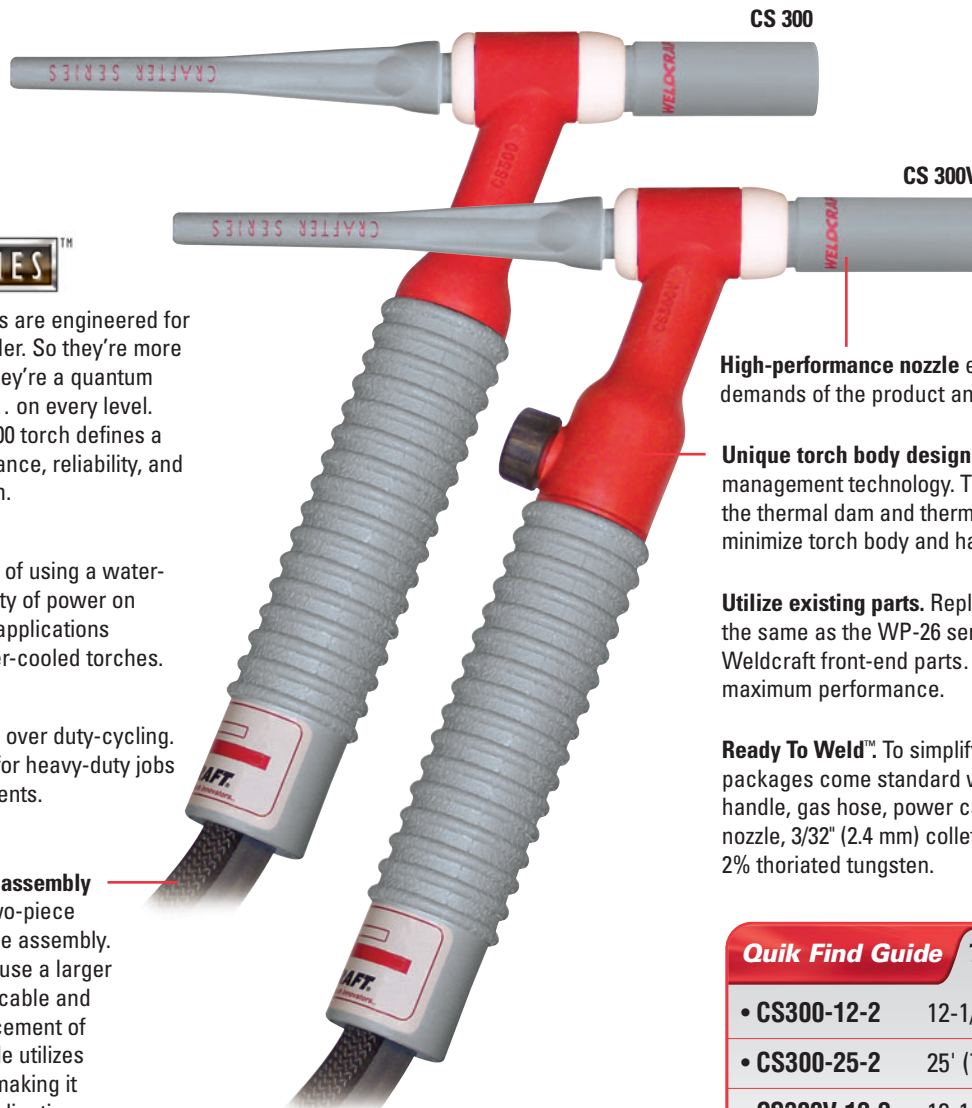
CRAFTER SERIES™

Crafter Series TIG torches are engineered for the professional TIG welder. So they're more than merely a step up. They're a quantum leap in TIG torch design... on every level. Our state-of-the-art CS 300 torch defines a new standard in performance, reliability, and reduced cost of operation.

Eliminate the complexity of using a water-cooled system. With plenty of power on hand, this torch handles applications usually reserved for water-cooled torches.

Reduce downtime due to over duty-cycling. Rated at 60% duty cycle for heavy-duty jobs in the roughest environments.

High-performance cable assembly consists of a high-flex, two-piece power cable and gas hose assembly. This makes it possible to use a larger conductor for the power cable and simplifies repair or replacement of the gas hose. Power cable utilizes EPDM rubber insulation making it ideal for field welding applications.



High-performance nozzle equipped to meet the demands of the product and application.

Unique torch body design utilizes heat management technology. This design maximizes the thermal dam and thermal speed channel to minimize torch body and handle temperatures.

Utilize existing parts. Replacement parts are the same as the WP-26 series torch. Standard Weldcraft front-end parts... your assurance of maximum performance.

Ready To Weld™. To simplify ordering, torch packages come standard with torch body, handle, gas hose, power cable, long back cap, nozzle, 3/32" (2.4 mm) collet, collet body, and 2% thoriated tungsten.

Quik Find Guide Torch Packages

- | | |
|---------------|-----------------|
| • CS300-12-2 | 12-1/2' (3.8 m) |
| • CS300-25-2 | 25' (7.6 m) |
| • CS300V-12-2 | 12-1/2' (3.8 m) |
| • CS300V-25-2 | 25' (7.6 m) |

WELDCRAFT
2741 N. Roemer Road
Appleton, WI 54911 USA

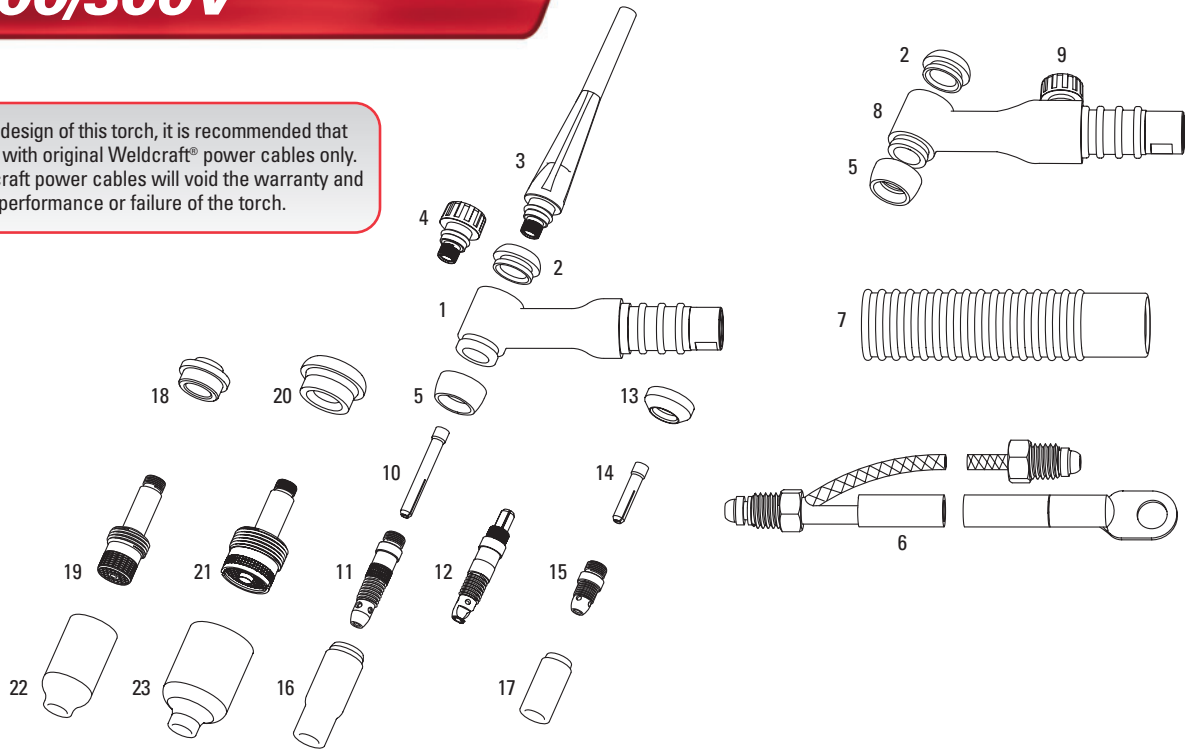
Weldcraft.com

Phone: 1.920.882.6800
Toll-free: 1.800.752.7620 (USA only)
Fax: 1.920.882.6840
E-mail: customerservice@weldcraft.com

WELD The TIG Welder's Choice
CRAFT

CS 300/300V

Due to the unique design of this torch, it is recommended that the torch be used with original Weldcraft® power cables only. Use of non-Weldcraft power cables will void the warranty and may result in low performance or failure of the torch.



Parts Listing

Item #	Description	Part #
1	Torch Body (70°) (includes cup gasket)	CS300
2	Insert	18-7
3	Long Back Cap (includes 98W18 O-ring)	CS210-BCL
4	Short Back Cap (includes 98W18 O-ring)	CS210-BCS
5	Cup Gasket	18CG
6	Power Cable — 2-pc. 12-1/2' (3.8 m) Gas Hose only — 12-1/2' (3.8 m)	CS300-12PC 40V75R
	Power Cable — 2-pc. 25' (7.6 m) Gas Hose only — 25' (7.6 m)	CS300-25PC 41V30R
7	Handle, Ribbed	CS300-R
8	Torch Body with Valve	CS300V
9	Valve Stem (includes 98W77 O-ring)	VS-1

Accessories

Description	Part #
Accessory Kit — (1) short back cap (3) collets and collet bodies 1/16", 3/32", 1/8" (3) alumina nozzles 5, 6, 8 (3) 7" 2%-tungsten electrodes 1/16", 3/32", 1/8"	AK-3
Cable Cover — 10' (3 m)	WC-3-10
Cable Cover — 22' (6.7 m)	WC-3-22
International-Style Connector	Q5

Non-Gas Lens Set-Up

Item #	Description	Electrode Diameter — inch (mm)							
		.020 (0.5)	.040 (1.0)	1/16 (1.6)	3/32 (2.4)	1/8 (3.2)	5/32 (4.0)		
10	Collet	10N21	10N22	10N23	10N24	10N25	54N20		
11	Collet Body	10N29	10N30	10N31	10N32	10N28	406488		
12	Single-Piece Collet/Collet Body	—	—	10N116SP	10N332SP	10N18SP	—		
13	Stubby Gasket	18CG20	18CG20	18CG20	18CG20	18CG20	18CG20		
14	Stubby Collet	—	10N22S	10N23S	10N24S	10N25S	—		
15	Stubby Collet Body	—	17CB20	17CB20	17CB20	17CB20	—		
Item #	Description	Nozzle Size — size # (inch)							
		4 (1/4)	5 (5/16)	6 (3/8)	7 (7/16)	8 (1/2)	10 (5/8)	12 (3/4)	Short
16	Alumina	10N50	10N49	10N48	10N47	10N46	10N45	10N44	—
17	Stubby Alumina	13N08	13N09	13N10	13N11	10N12	13N13	—	—

Gas Lens Set-Up

Item #	Description	Electrode Diameter — inch (mm)							
		.020 (0.5)	.040 (1.0)	1/16 (1.6)	3/32 (2.4)	1/8 (3.2)	5/32 (4.0)		
18	Gas Lens Insulator	54N01	54N01	54N01	54N01	54N01	54N01		
10	Collet	10N21	10N22	10N23	10N24	10N25	54N20		
19	Gas Lens	45V29	45V24	45V25	45V26	45V27	45V28		
20	Lg. Dia. Gas Lens Insulator	54N63	54N63	54N63	54N63	54N63	54N63		
10	Collet	10N21	10N22	10N23	10N24	10N25	54N20		
21	Lg. Dia. Gas Lens	45V0204	45V0204	45V116	45V64	995795	45V63		
Item #	Description	Nozzle Size — size # (inch)							
		4 (1/4)	5 (5/16)	6 (3/8)	7 (7/16)	8 (1/2)	10 (5/8)	12 (3/4)	Short
22	Alumina Gas Lens	54N18	54N17	54N16	54N15	54N14	—	—	54N19 ¹
23	Alumina Lg. Dia. Gas Lens	—	—	57N75	—	54N74	53N88	53N87	54N89 ¹

NOTES:

1. Not recommended for use with high-frequency current.

WELD The TIG Welder's Choice
CRAFT